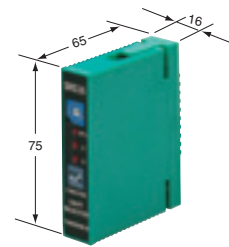




- Slim card type of only 16 mm in width
- Space-saving design
Small footprint even with more than one unit adjacently installed

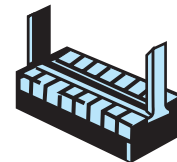


Type

Type	Model	Bit count	Operation mode	Output mode	Power supply
Card type	SRS-16	16bit	ON-OFF operation	Open collector	12-24V DC ±10%

Optional Parts

Type	Model	Description
Terminal block	TB10	Mountable on DIN rail (35 mm)



Terminal block (TB10)

Panel Description

① Digital switch for setting bit length
16-bit with "0" setting

② Output operation indicator

③ Data indicator

④ Shift indicator

⑤ Mode selector switch
Response time switch
Input mode switch

Bit length setting and bit count

Setting	Bit count (bits)
A	10
B	11
C	12
D	13
E	14
F	15
0	16

Rating/Performance/Specification

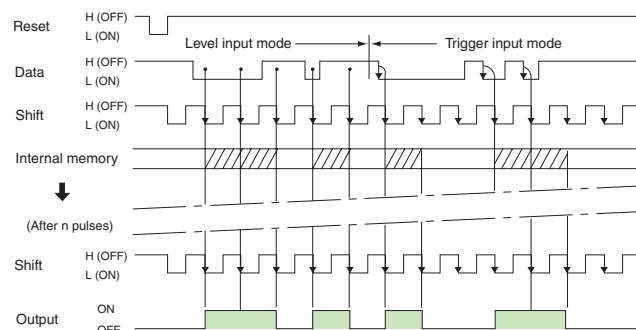
Rating/performance	Type	Card type
	Model	SRS-16
	Bit count	16bit
	Power supply	12-24VDC \pm 10%
	Current consumption	25mA max.
	Input signal (common to all inputs)	Open collector: L level: ON; H level: OFF Voltage: L level: 0-1 V; H level: 6-24 V Contact: L level: ON; H level: OFF
	Data input	TRIGGER (T) mode: temporarily stored at H \rightarrow L (fall) LEVEL (L) mode: active at L level
	Minimum input pulse width	SW2: ON \rightarrow 30 ms / OFF \rightarrow 500 μ s
	Shift input	Shift at H \rightarrow L (fall)
	Minimum input pulse width	SW1: ON \rightarrow 30 ms / OFF \rightarrow 500 μ s
	Reset input	Reset at L level Minimum input pulse width: 30 ms
	Position of output	Variable between 1 and 16 bits
	Operation mode	ON-OFF operation
	Output mode	Open collector output Rating: 100 mA (30 VDC) max.
Specification	Connection	Insert; 10-pin 4-mm pitch
	Case material	Resin
	Mass	60g max.
	Notes	<ul style="list-style-type: none"> Terminal block (TB10) mountable on DIN rail (35 mm) is optionally available. See Panel Description for indicators, switches, etc.

Environmental Specification

Environment	Ambient temperature	-10 - +50 °C (non-freezing)
	Ambient humidity	35-85%RH (non-condensing)
	Protective structure	IP40
	Vibration	10-55 Hz / 1.5 mm amplitude / 2 hour each in 3 directions
	Dielectric withstanding	1500 VAC for 1 minute
	Insulation resistance	500 VDC, 20 M Ω or higher.

Operation mode

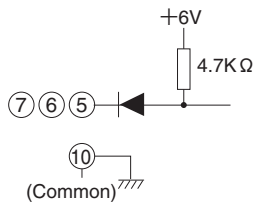
Output is activated at the rise of a shift pulse and stays activated until the next rise. When continuous data signal is input, output stays activated.



SRS

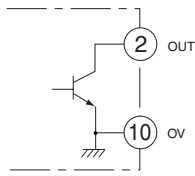
Input Circuit

- All inputs are activated by current supply. The input impedance is 4.7 kΩ.



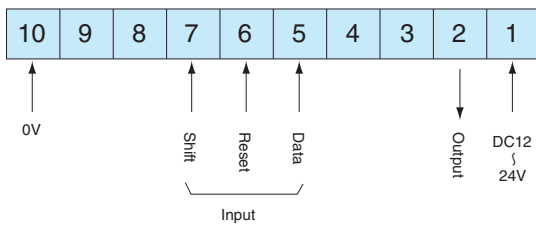
Contact signal	Open collector signal		Voltage signal	
○ Both accepted	○ Accepted	× Not accepted	○ Accepted; R is irrelevant	△ Accepted only with R of 1 kΩ or lower

Output Circuit



- Output: open collector
- For relay or current output, apply the rating for output transistor: 30 VDC 100 mA max.

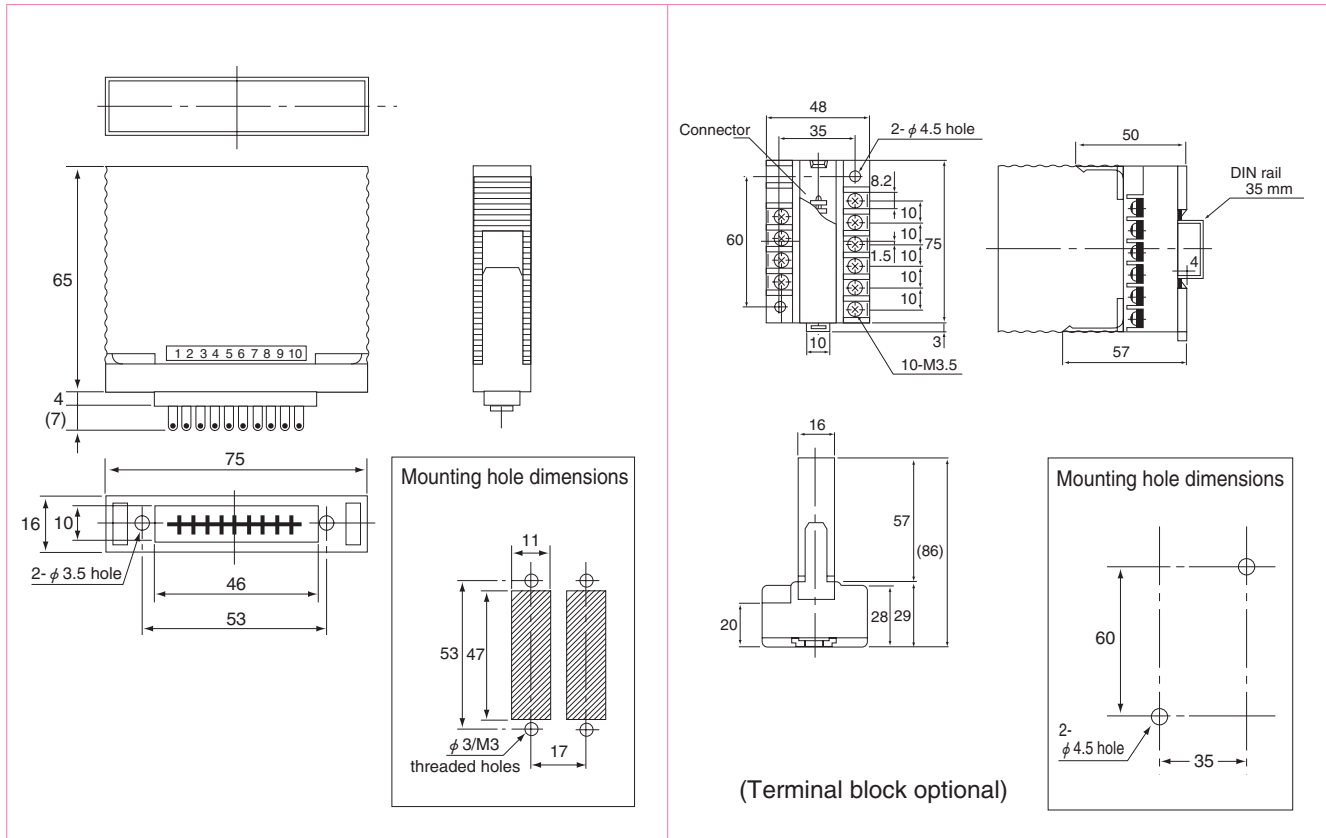
Connection



(Wires soldered)

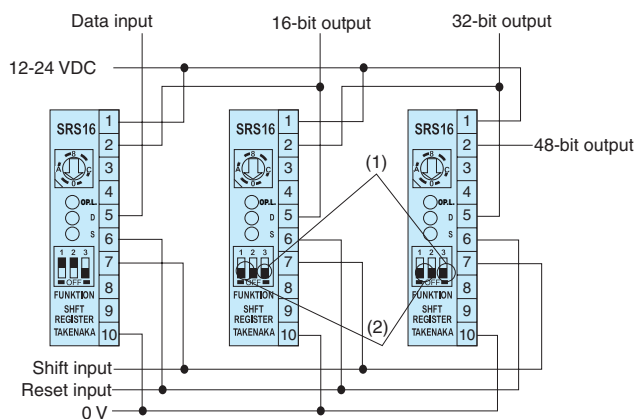
For relay output	For voltage output
	<p>For the output resistor, find a resistance value that limits the supply current to up to 100 mA.</p>

Dimensions (in mm)



Bit Count Extension

- Up to 3 units can be serially connected for increasing the bit count.



- Same mode (L input mode for OFF) as the first unit
- OFF for the second and subsequent units

- Input of the individual unit may be used as interrupt input as well as extension of bit length.